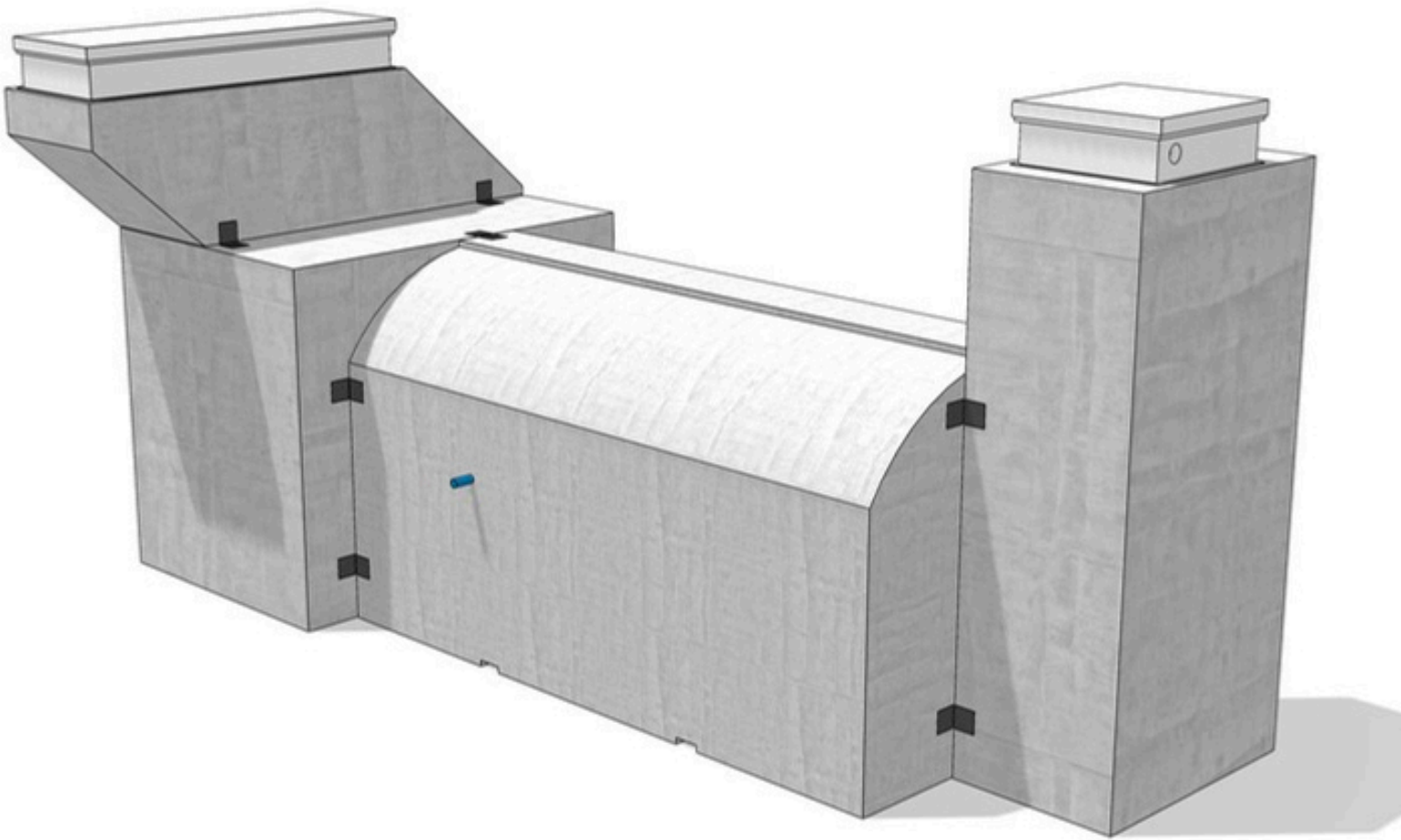


CIVIL PROTECTION SYSTEMS

PRODUCT SHEET



DUAL-USE DEFENCE ROOMS
CRAFTED FOR GENERATIONS

DESIGNED, MANUFACTURED AND TESTED IN COOPERATION WITH



**Protected
underground**



www.protectedunderground.com

Your peace of mind starts underground

With a different kind of sanctuary

This space represents resilience, readiness, and absolute peace of mind, a sanctuary where everyday comfort meets ultimate security.

What grew out of a love for traditional earth cellars and keeping ancient building customs alive has naturally evolved. Over the past 12 years, we have mastered subterranean living, installing over 2,000 modules across the region. Today, we bring that heritage and craftsmanship to our premium safe rooms at Protected Underground.

We have embraced a dual-use philosophy. Today, your module serves as an elegant wine cellar, a private man cave, or a quiet retreat. Tomorrow, it is a fully equipped defence room. This space is not just about survival; it supports a meaningful, relaxed lifestyle right now while silently standing guard for the future.

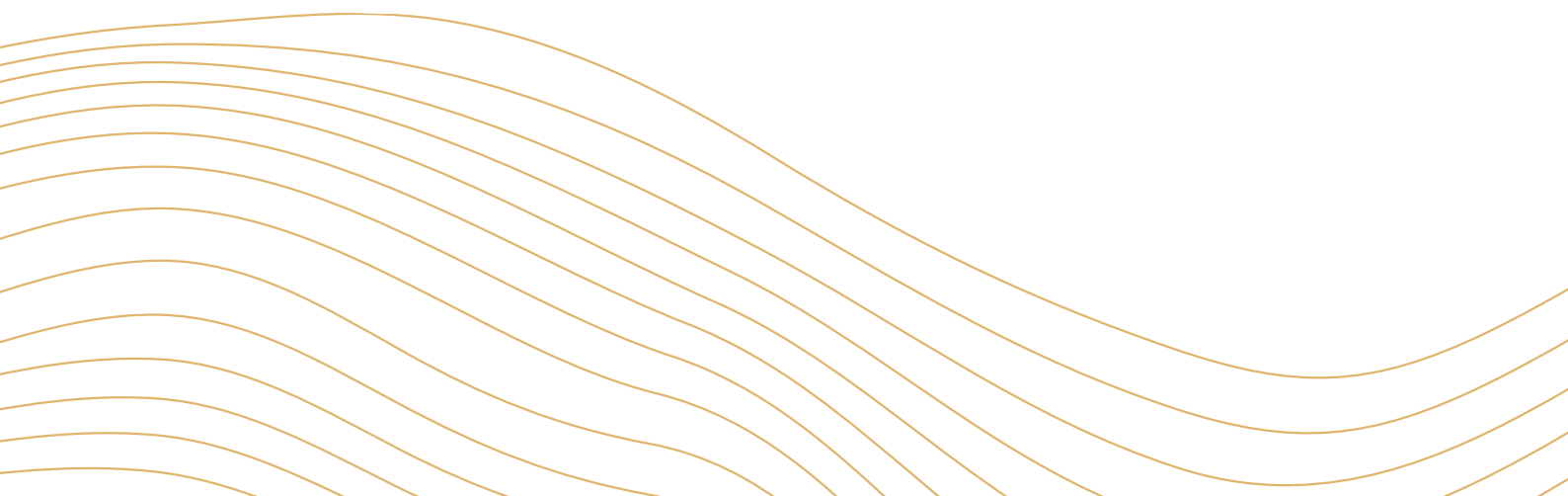
Tested and ready to go, with a discrete, plug-and-play installation of just a few days, it is designed to completely bypass the hassle of traditional construction. Manufactured from high-strength reinforced concrete, we have rigorously perfected our solutions alongside top field engineers and tested them with several NATO country armies.

A shelter is something you might only need once, but when that moment arrives, it is impossible to acquire one after the fact. Whether facing a shifting political world order, extreme weather and temperatures, or civil unrest, this room is your ultimate, quiet insurance policy.

Welcome to a secure space that aligns with your lifestyle, your privacy, and your unconditional desire to protect your loved ones.

Welcome to Protected Underground.

Rauno Oja
The CEO of Revonia

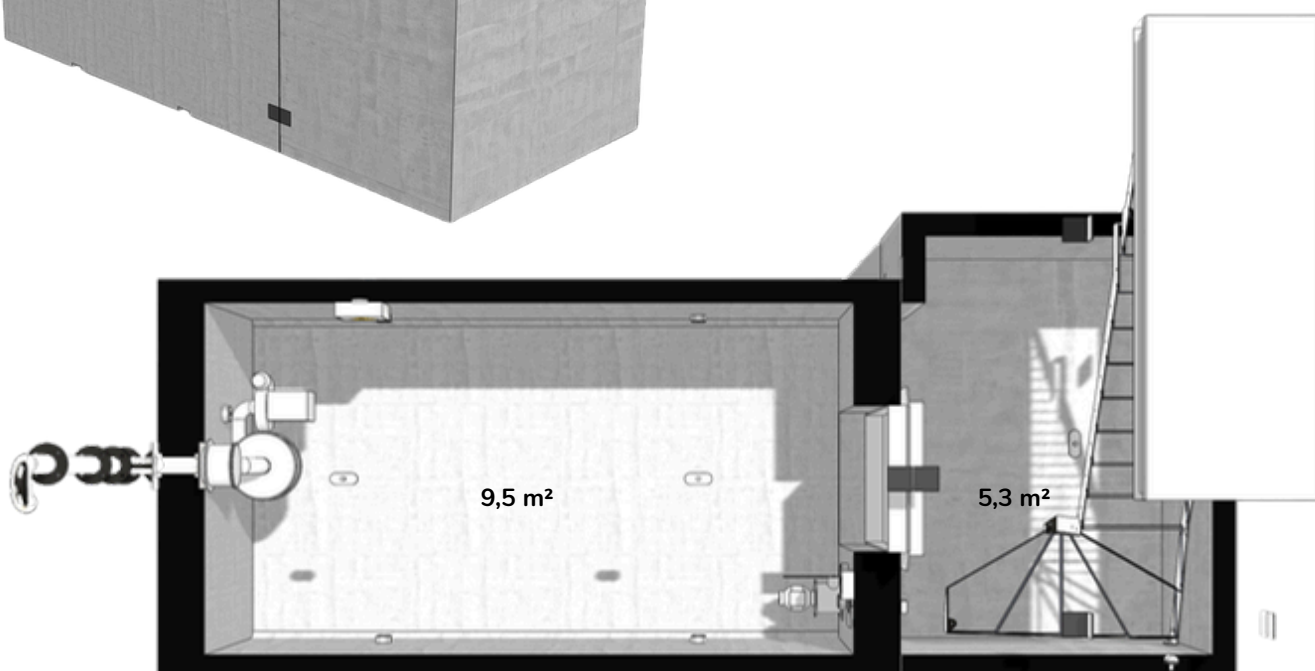
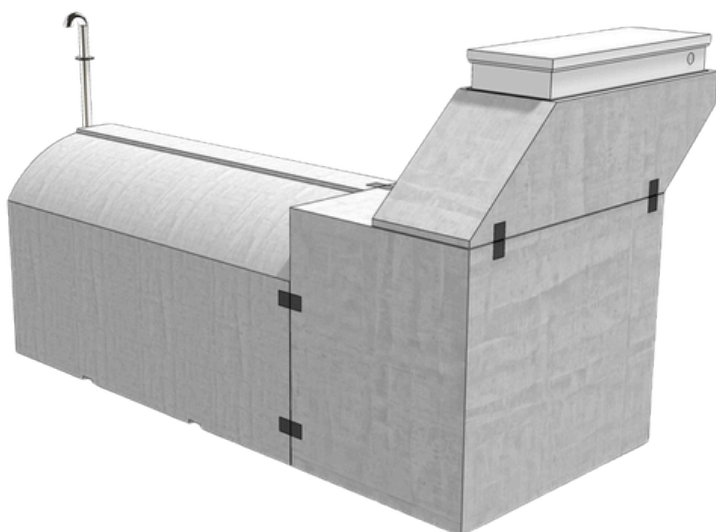
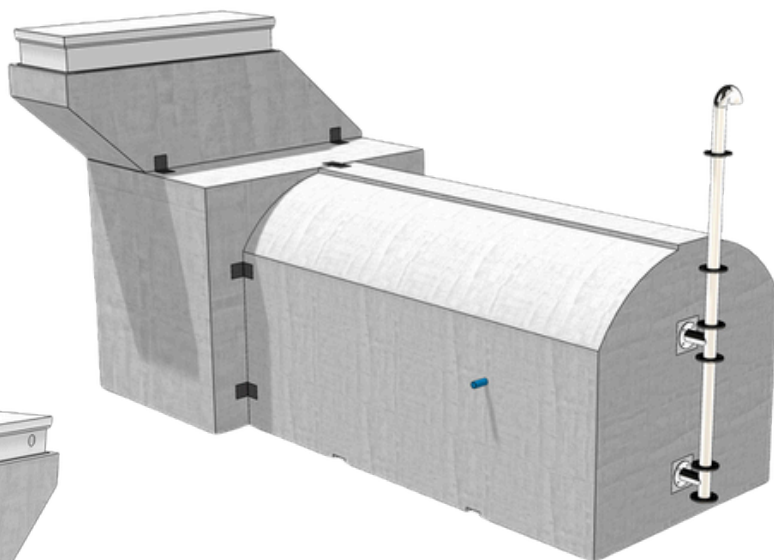


S1 - top entrance premium

84 990€

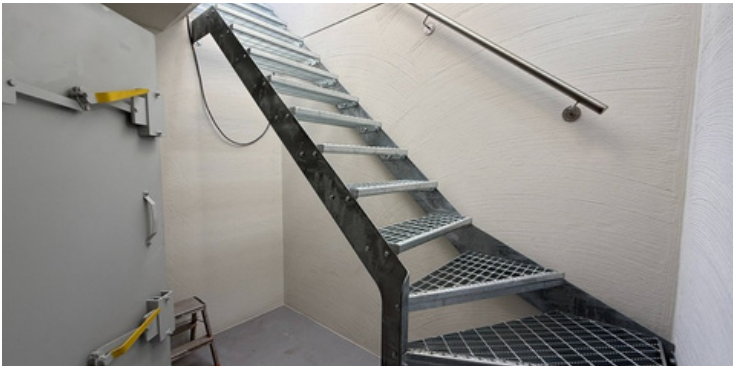
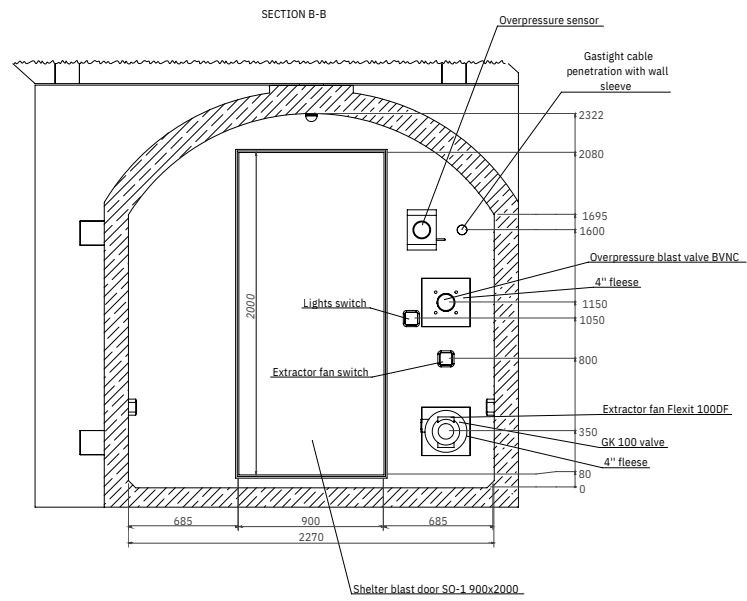
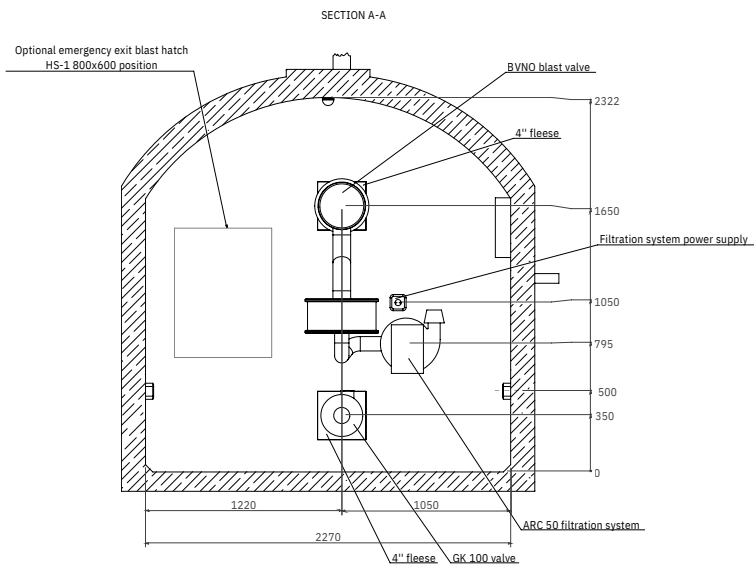
Prices do not include VAT

Walking into the S1 does not feel like entering a bunker. This is designed to become a part of the home during everyday operations. It can be used as a wine cellar, mancave, or as a storage unit to supplement everyday needs. We designed the square staircase to be wide and inviting, making it easy for you to carry down crates for your wine collection or for grandchildren and the elderly to head down to the saferoom. This is our most spacious family solution, built with a professional two-stage entry system. You pass through a strong external hatch before reaching the internal blast door, creating a true airlock that ensures your living space remains a filtered and clean sanctuary regardless of what is happening outside. It is the flagship of our range, offering the highest air filtration volume for long-term stays and the most discreet architectural presence on your property.

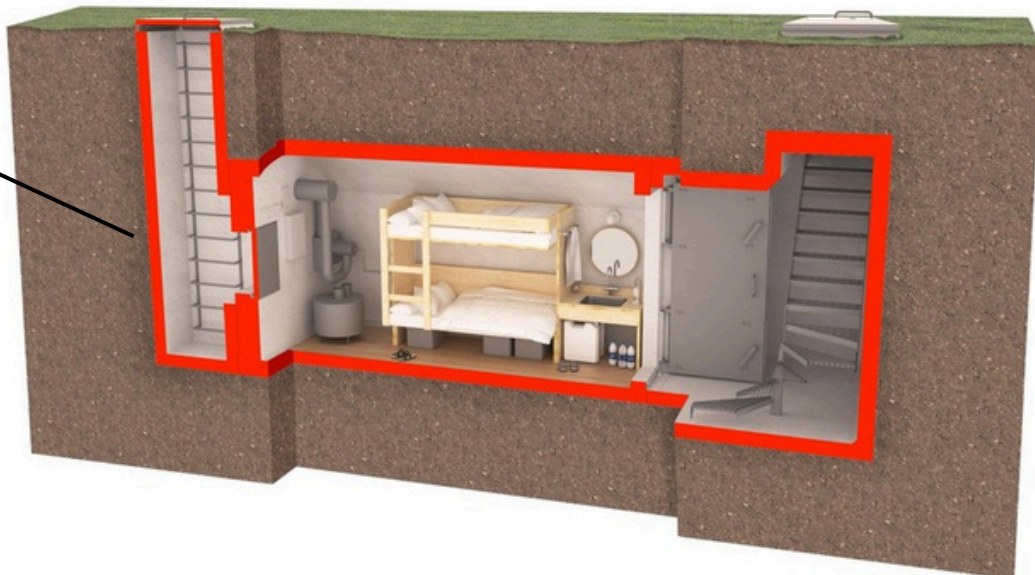


*Airflow in filtration mode/ ventilation mode

S1 - dimensions



Optional escape shaft

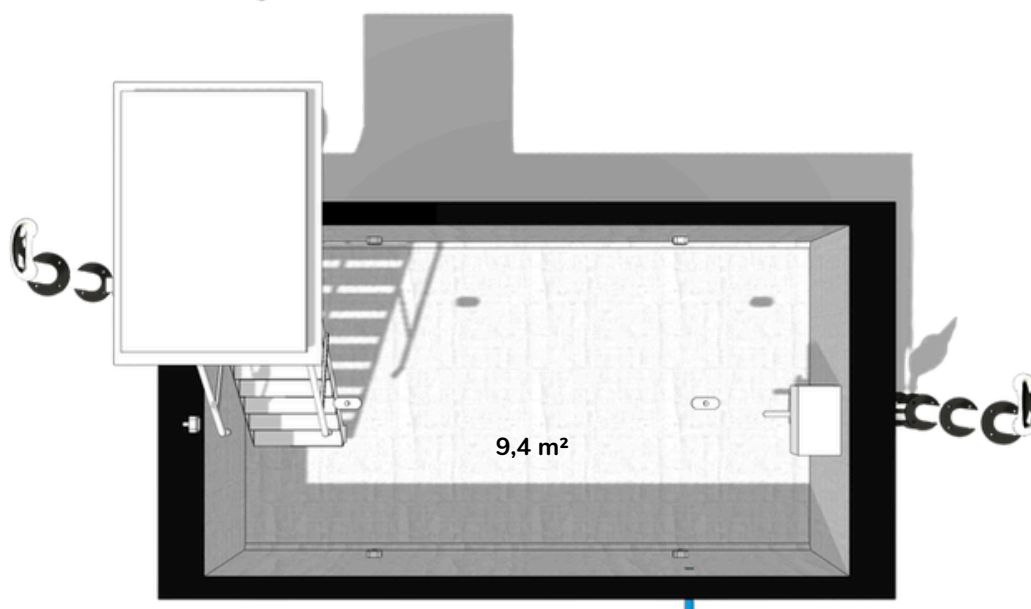


S2 - top entrance compact

61 650€

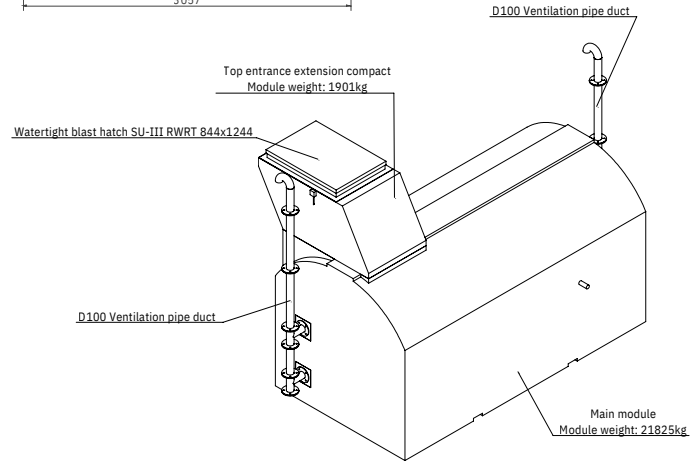
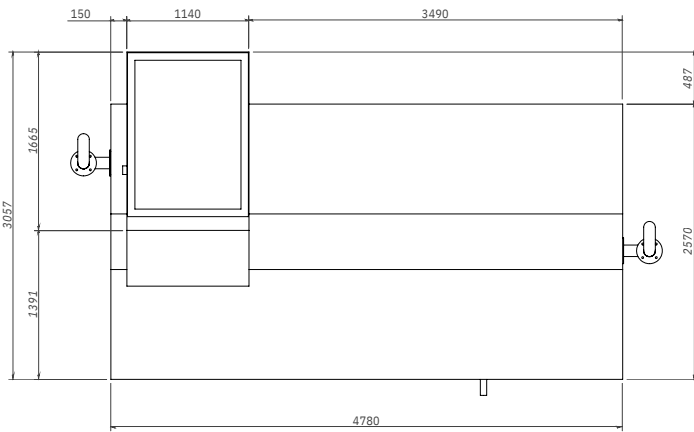
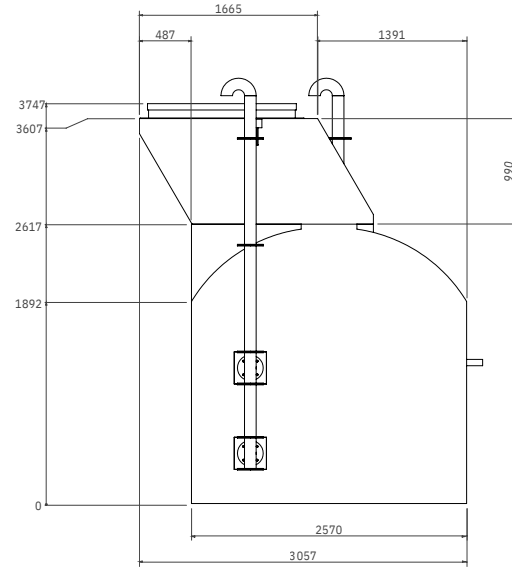
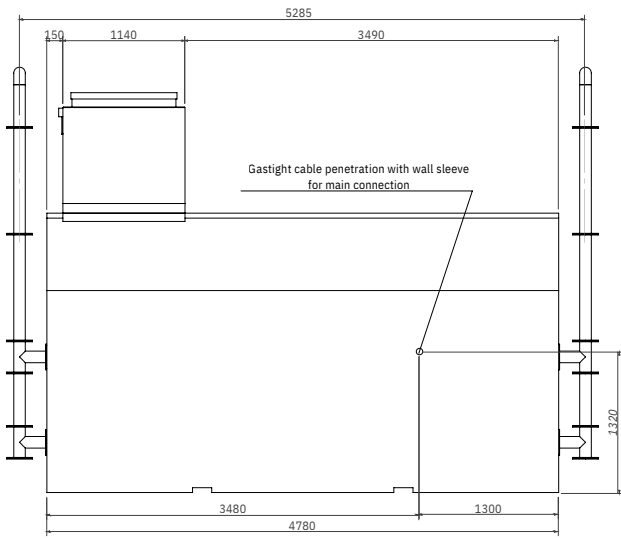
Prices do not include VAT

The S2 is for the homeowner who values a well-kept secret. We focused on making the entrance as minimal and discreet as possible so it can be completely hidden within a wooden terrace, tucked under a small garden shed, or covered by simple landscaping. While it uses a steeper, more efficient staircase to maintain a compact footprint, it is a fully equipped fortress. It features a specialized watertight blast hatch and the Atmos Safe 360 filtration system, ensuring a high-tech, sealed environment for a mid-sized family. This is the ideal choice for those who want professional protection that stays out of sight and out of mind until the it is truly needed.

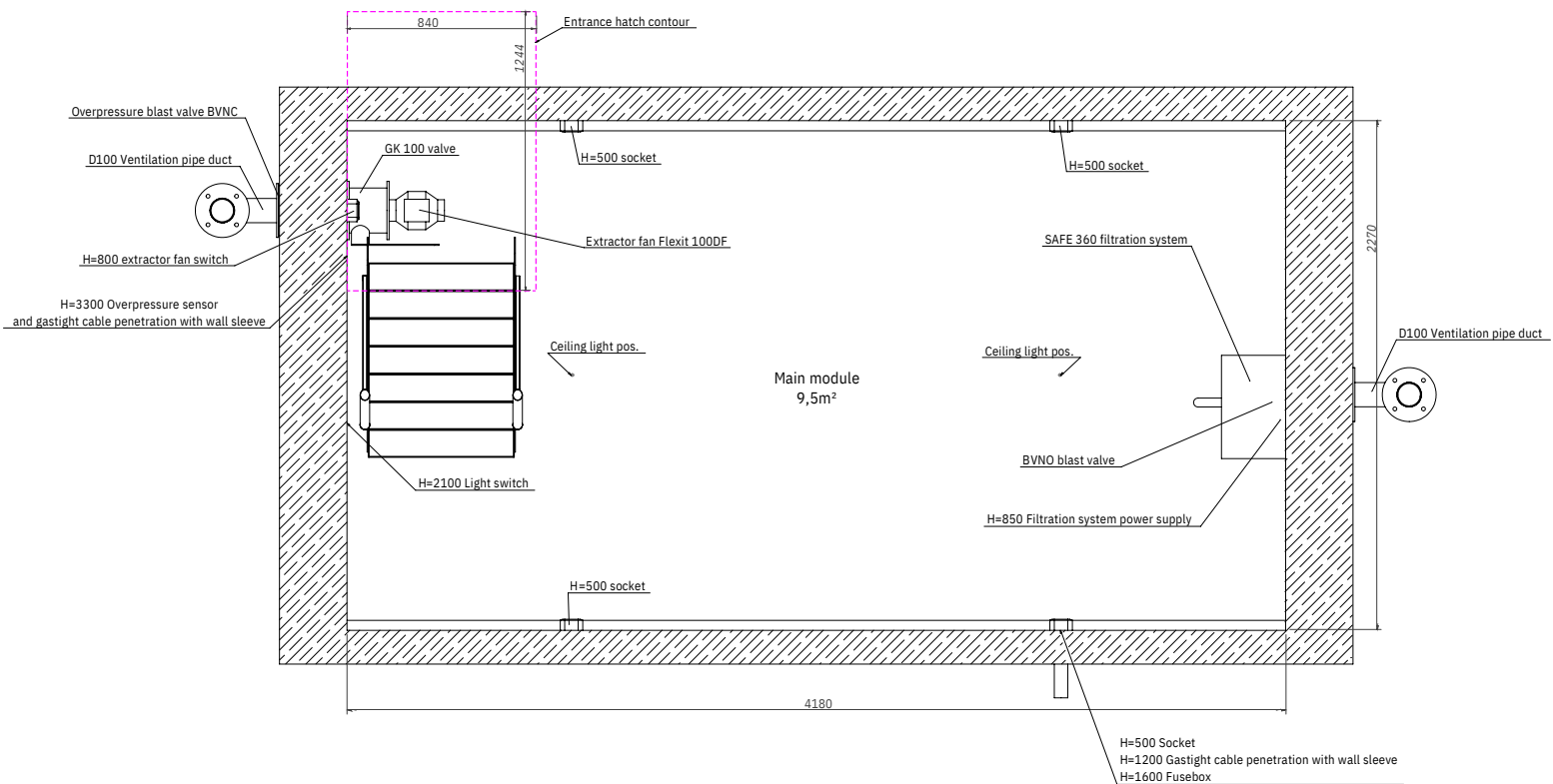


*Airflow in filtration mode/ ventilation mode

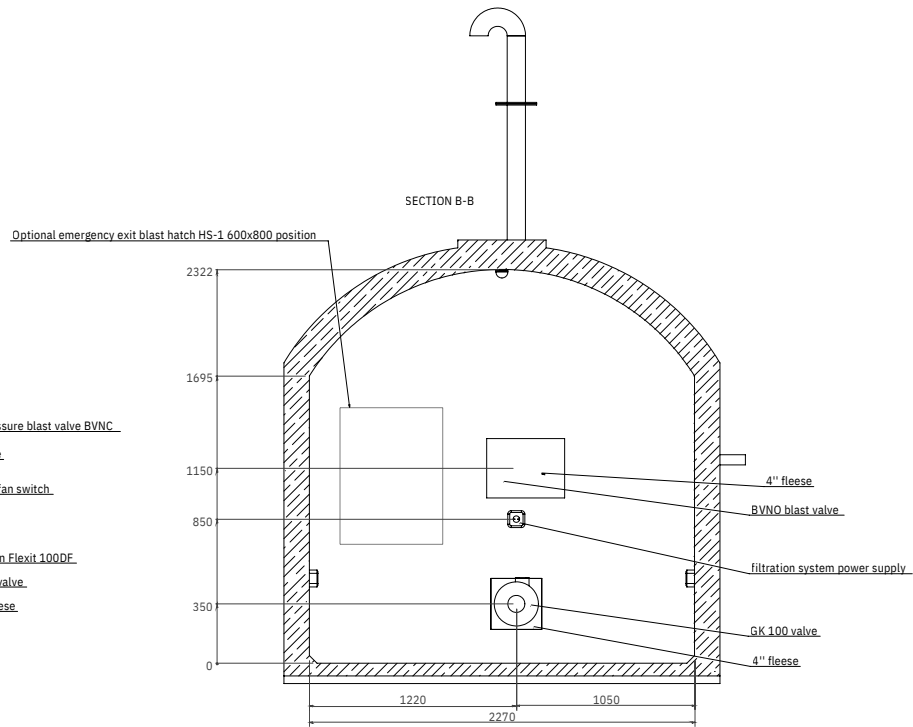
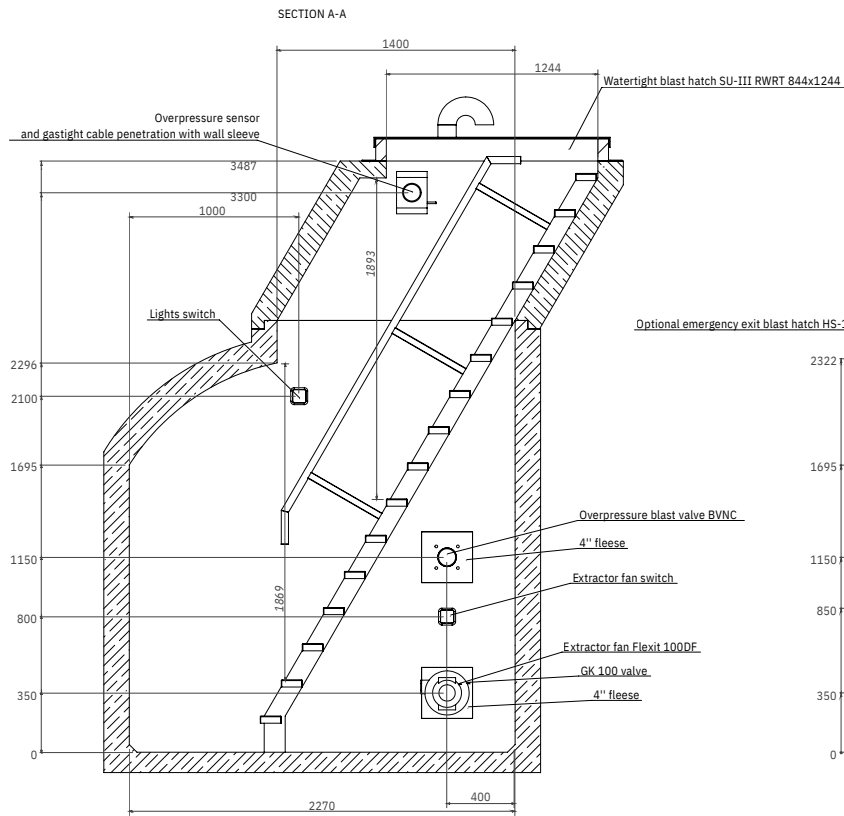
S2- dimensions



Interior floor area - 9,5m²



S2- dimensions

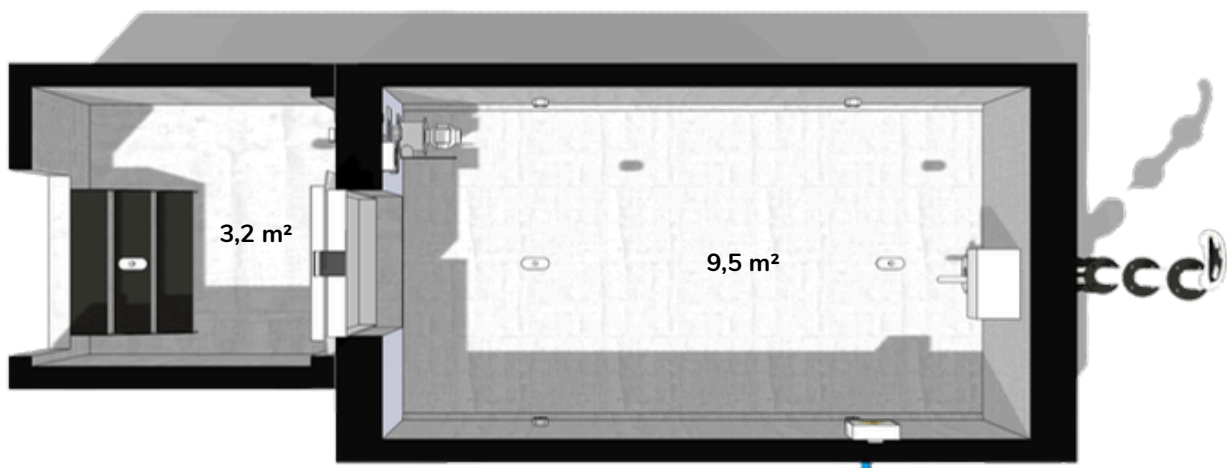
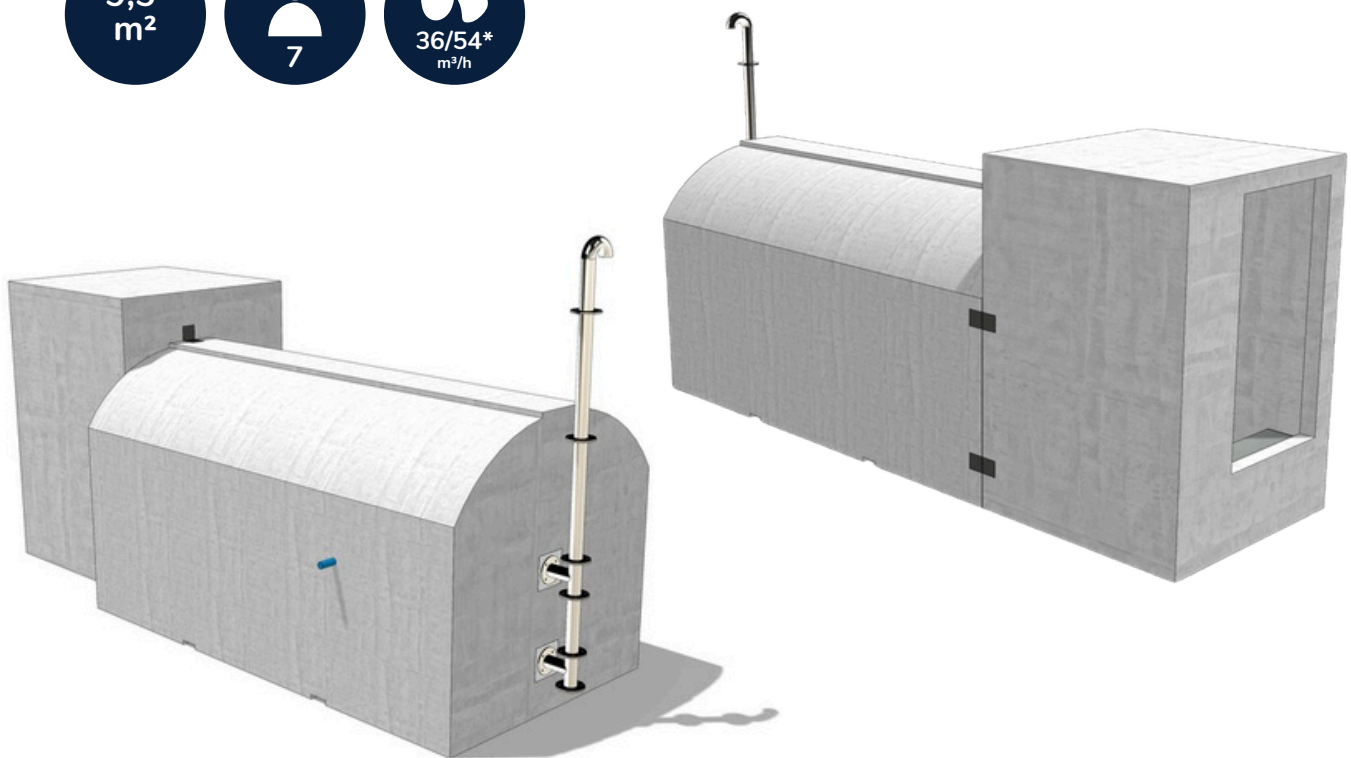


S3 - connected with a house

60 200€

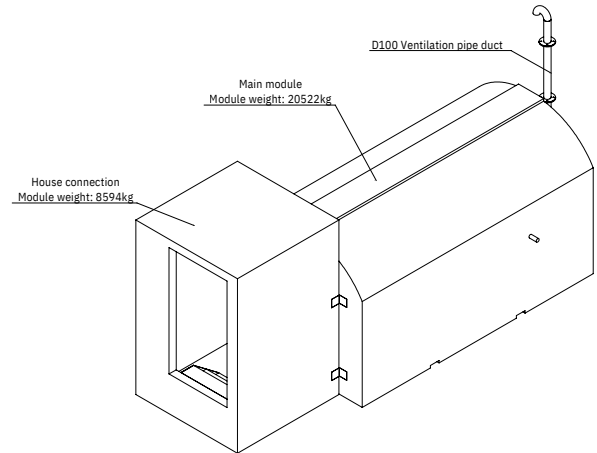
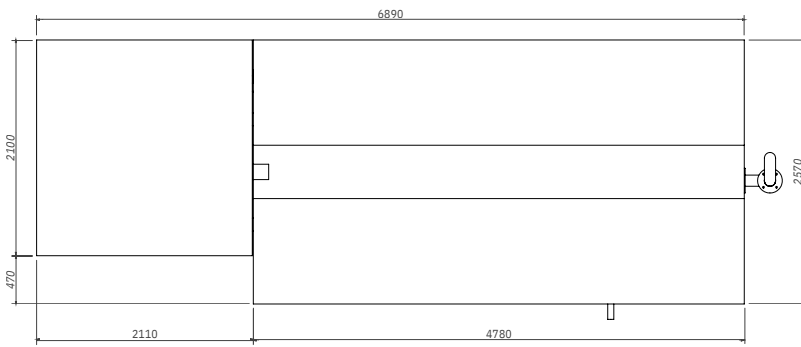
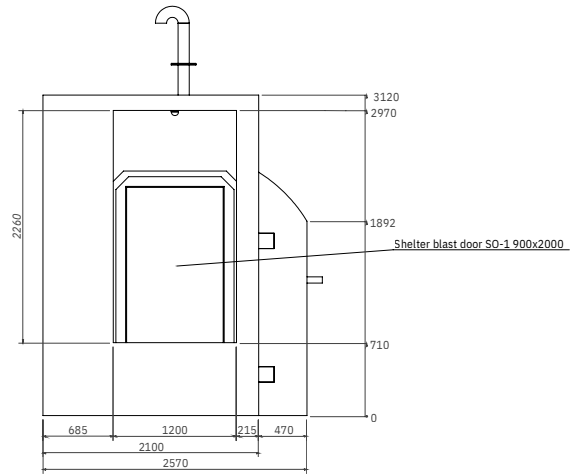
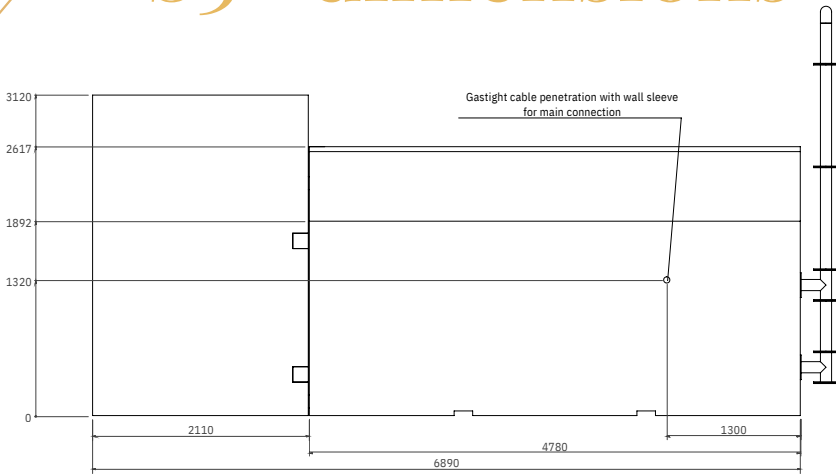
Prices do not include VAT

Your home is your fortress, and the S3 makes that literal. This model connects directly to your existing basement or foundation, turning a cozy part of your house into a bombproof safe room. There is no need to step outside during a crisis or severe storm. You simply walk through a dedicated door in your house and you are instantly protected by reinforced concrete and a certified blast door. During peacetime, this room doubles as a high-security pantry or a quiet home office, making it a functional part of your everyday life. When conflict or disaster strikes, it provides immediate, seamless protection without you ever having to leave the warmth of your home. The modular build allows connecting with different house types in different depths and includes a separate ventilation option from the main house.

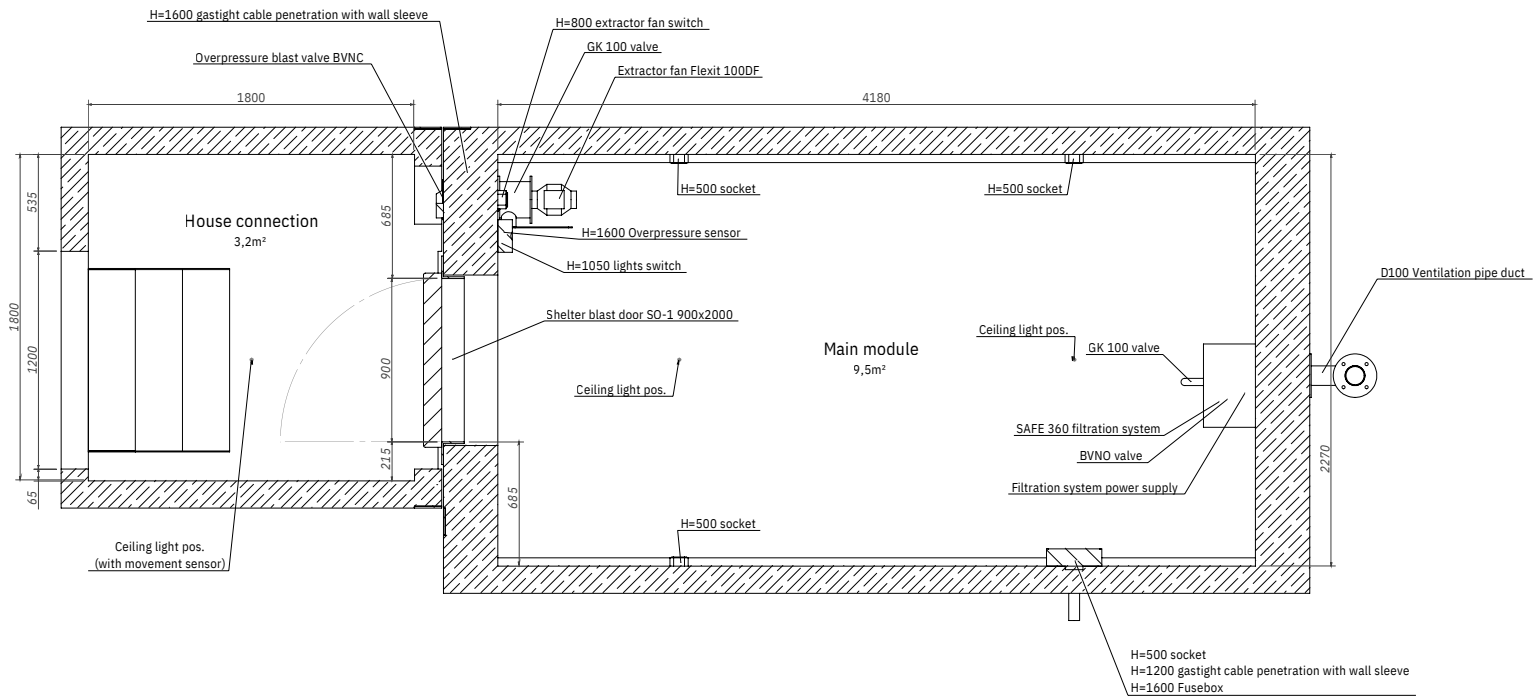


*Airflow in filtration mode/ ventilation mode

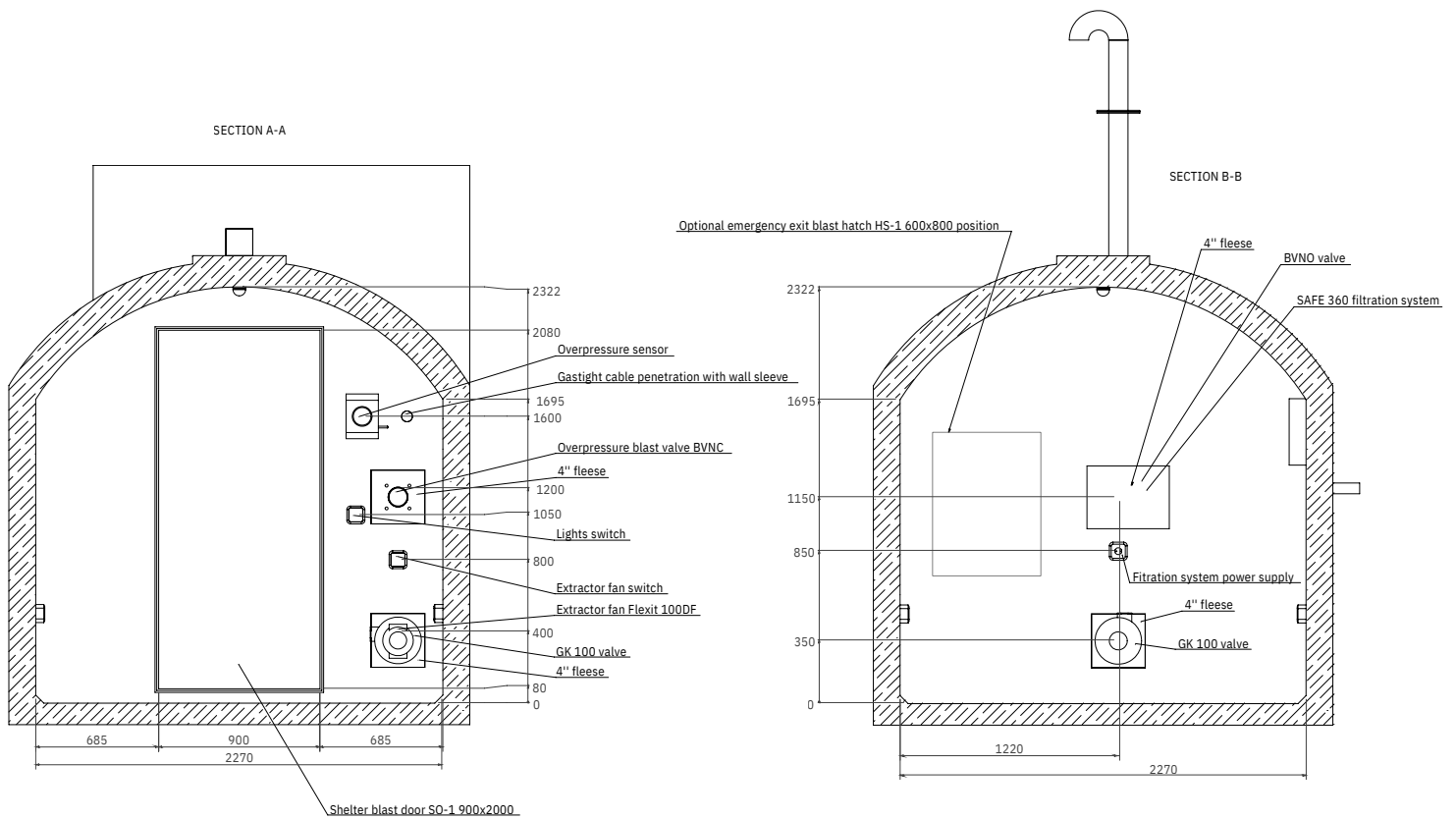
S3- dimensions



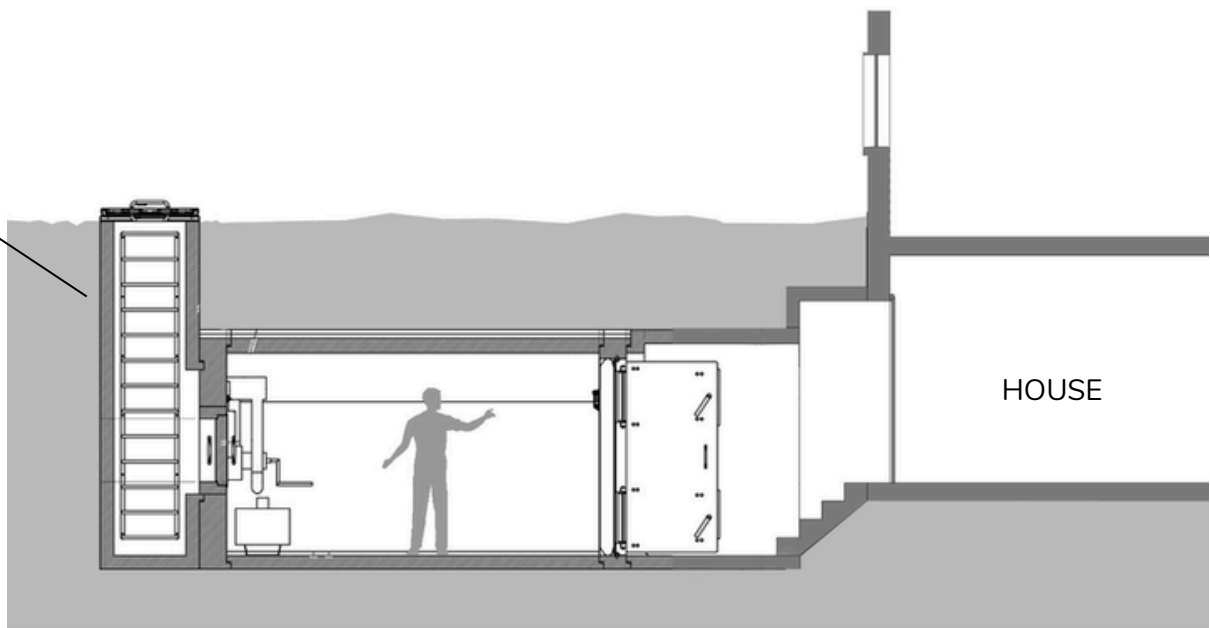
Interior floor area - 9,5m²



S3- dimensions



Optional
escape
shaft

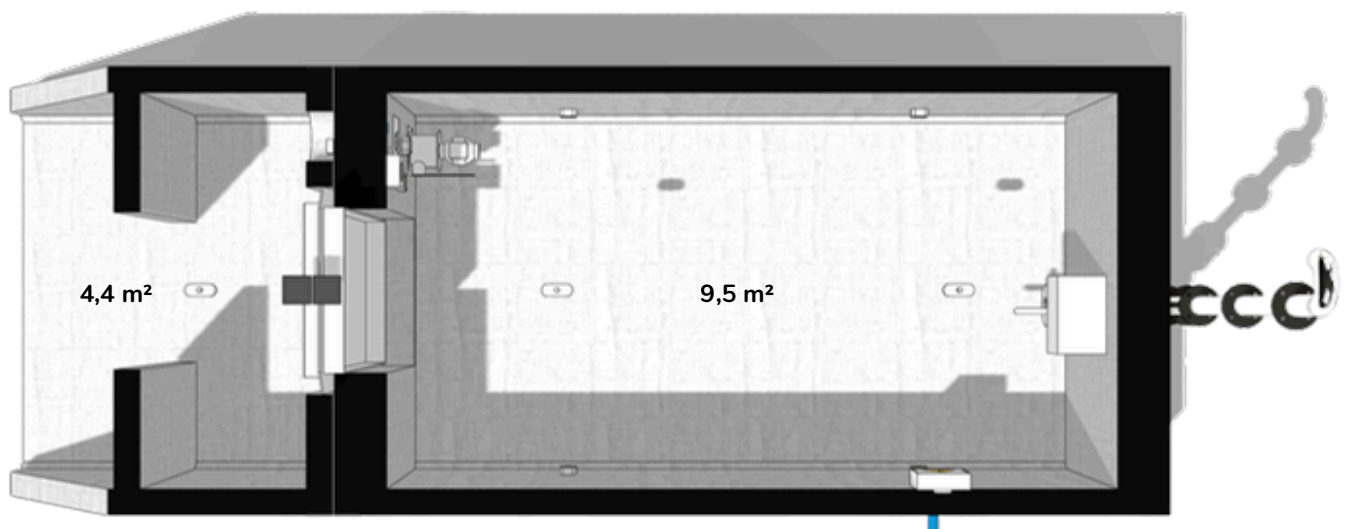


S4 - ground entrance

58 990€

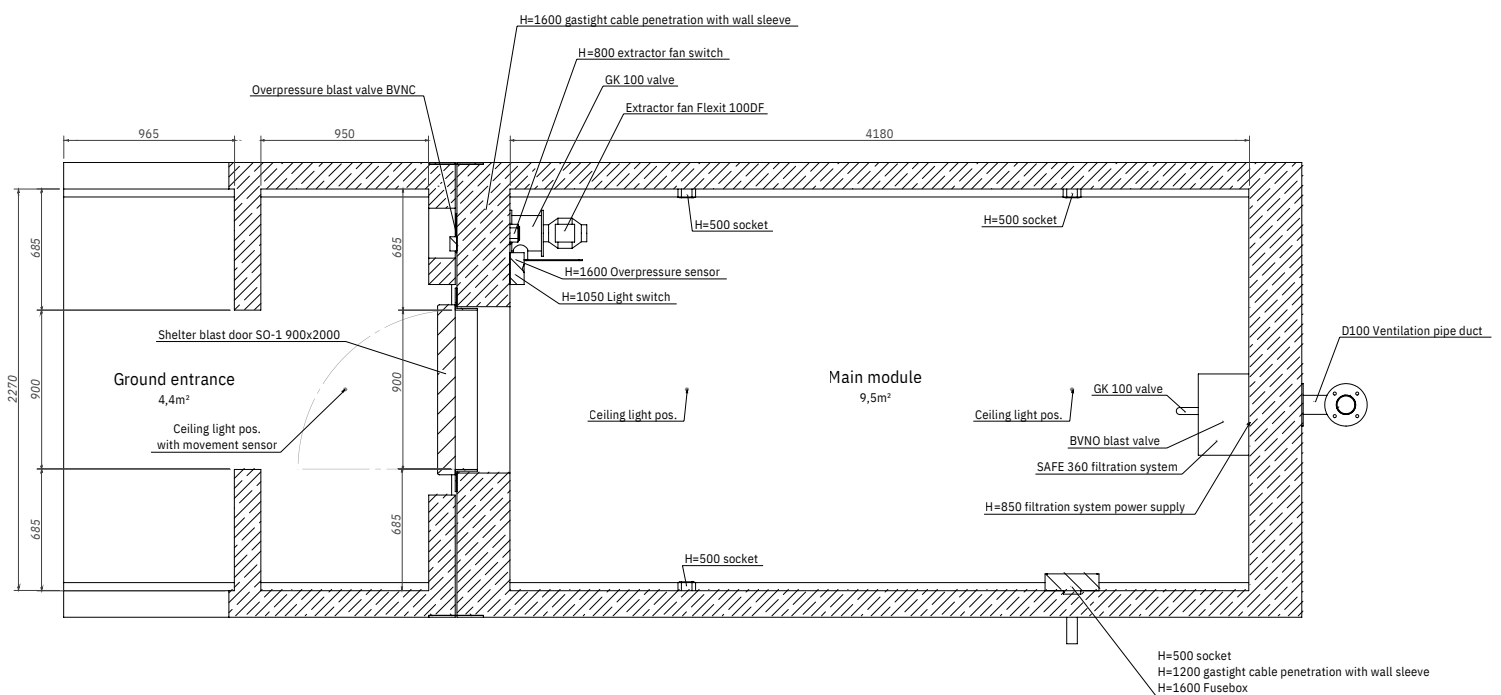
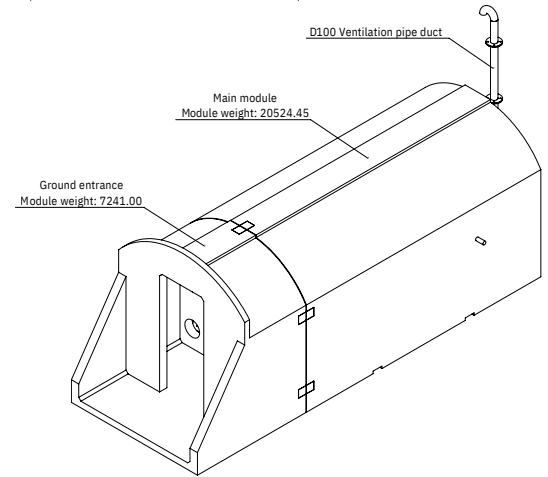
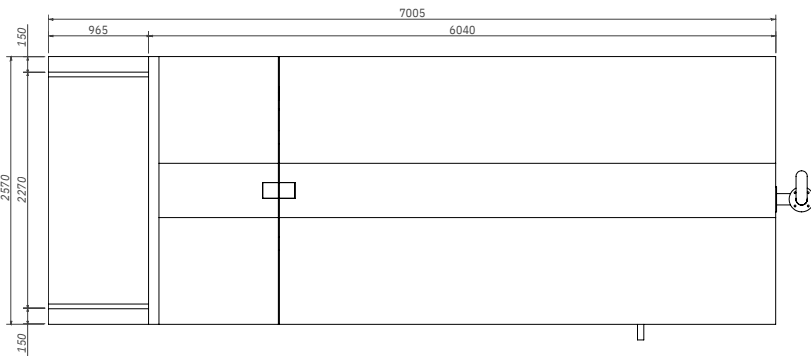
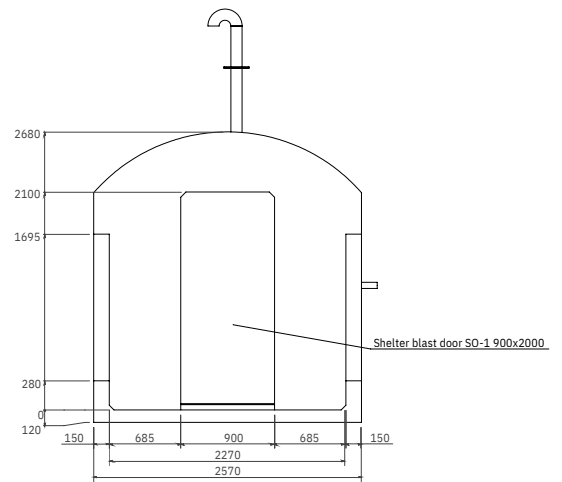
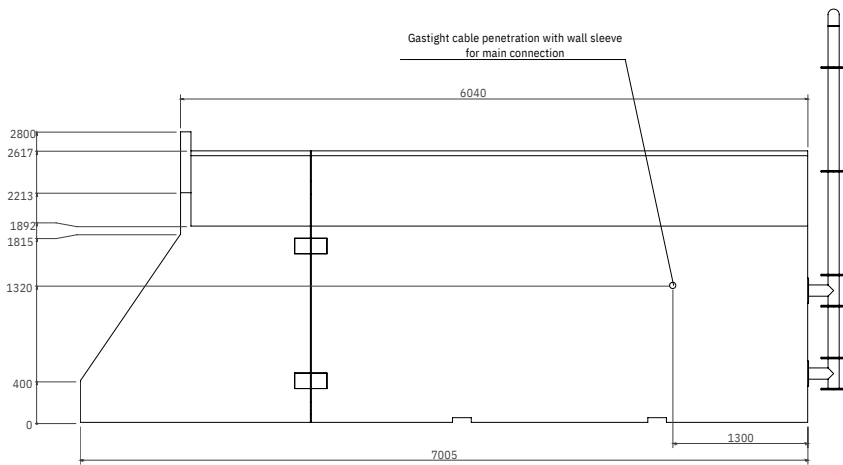
Prices do not include VAT

The S4 is our most accessible solution and the one to install quickest, specifically engineered for properties with high groundwater levels where deep excavation is complicated. Because it features a walk-in entrance at terrain level, there are no stairs to navigate, making it the perfect choice for moving heavy supplies or equipment in and out with total ease. Also ideal for multi-house environments or for neighbouring houses. This model represents the perfection of our modular system, refined with over 2,000 similar builds to sit securely in any possible location. It is the ideal dual-use mancave that blends naturally into a flat landscape or into a hillside, offering a premium defence room that offers the much-needed peace of mind. All this without sacrificing the high-level protection and sufficient ventilation systems needed in bunkers and shelters.



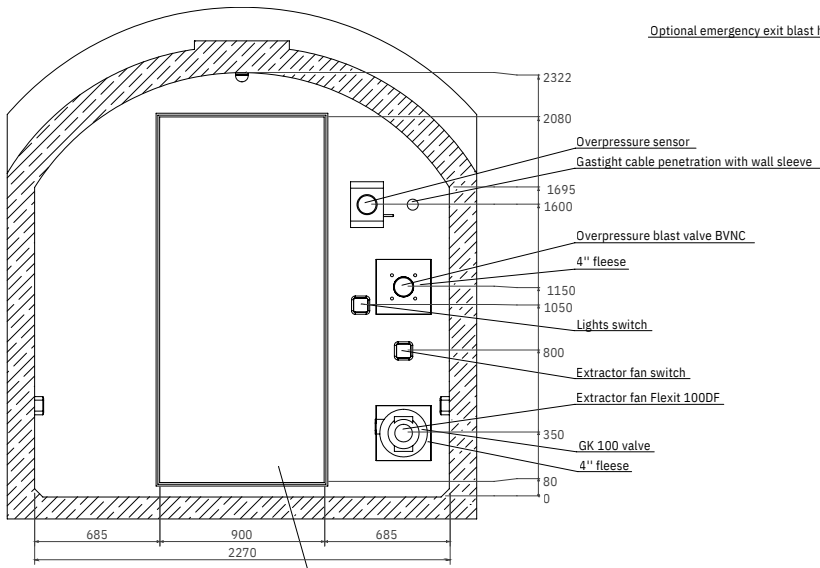
*Airflow in filtration mode/ ventilation mode

S4- dimensions



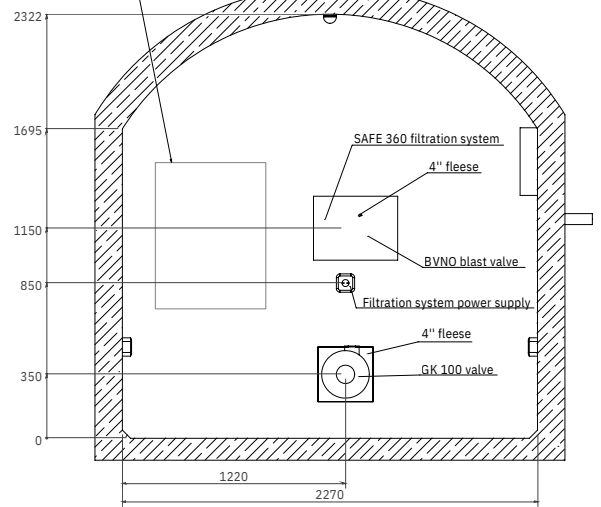
S4- dimensions

SECTION A-A



Optional emergency exit blast hatch HS-1 600x800 position

SECTION B-B



Shelter blast door SO-1 900x2000



Plug-and-play extensions

Escape shaft

15 800 €

An extra escape is your vital backup plan. If your main entrance is ever obstructed by debris or fallen trees, this concrete shaft ensures you and your family have a guaranteed secondary exit. It is a universal, modular addition that fits every standard shelter in our range. In many cases and countries, an additional escape route is also required by law.



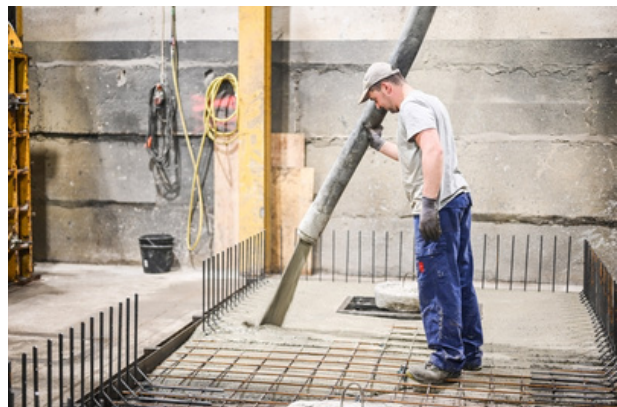
Ventilation upgrade from 5400 €

For those planning for larger groups, bigger rooms or longer stays, upgrading to the Arc ventilation system is the professional choice. This high-capacity unit moves significantly more air than the standard Safe 360, allowing more people to occupy the shelter safely for extended periods. The system includes a manual hand crank, ensuring your air supply remains functional even during a total power outage or electrical grid failure. Currently, only the S1 includes the Arc device. Consult our experts for more information about this!

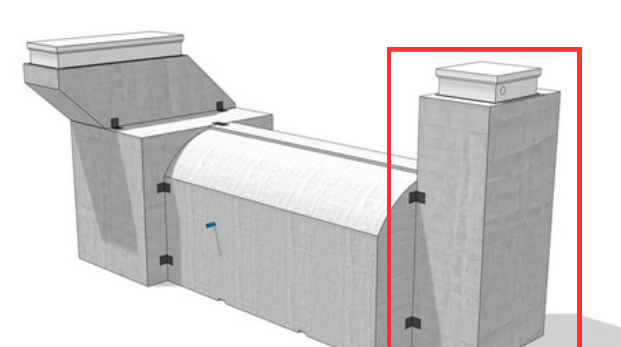
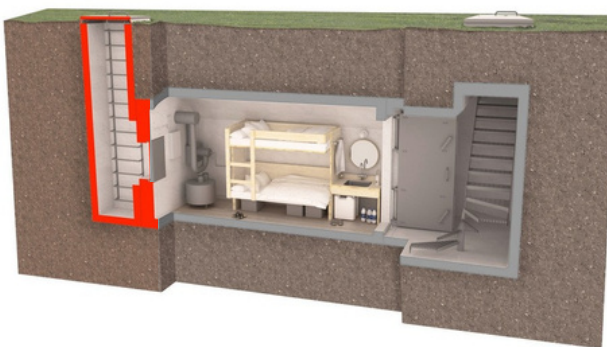
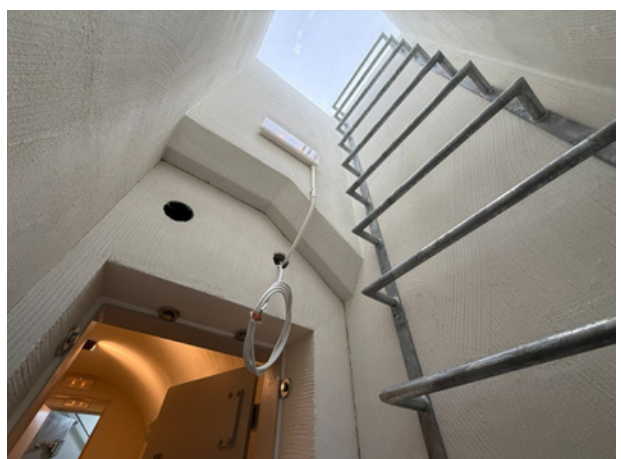
Connection package

2200 €

Our Connection Package add-on includes a dedicated water connection port, allowing you to bring fresh water into the shelter. It also features a passive antenna installation, ensuring you maintain a reliable connection to the outside world. This package transforms your module into a self-sufficient living space. Consult our experts for more possibilities.

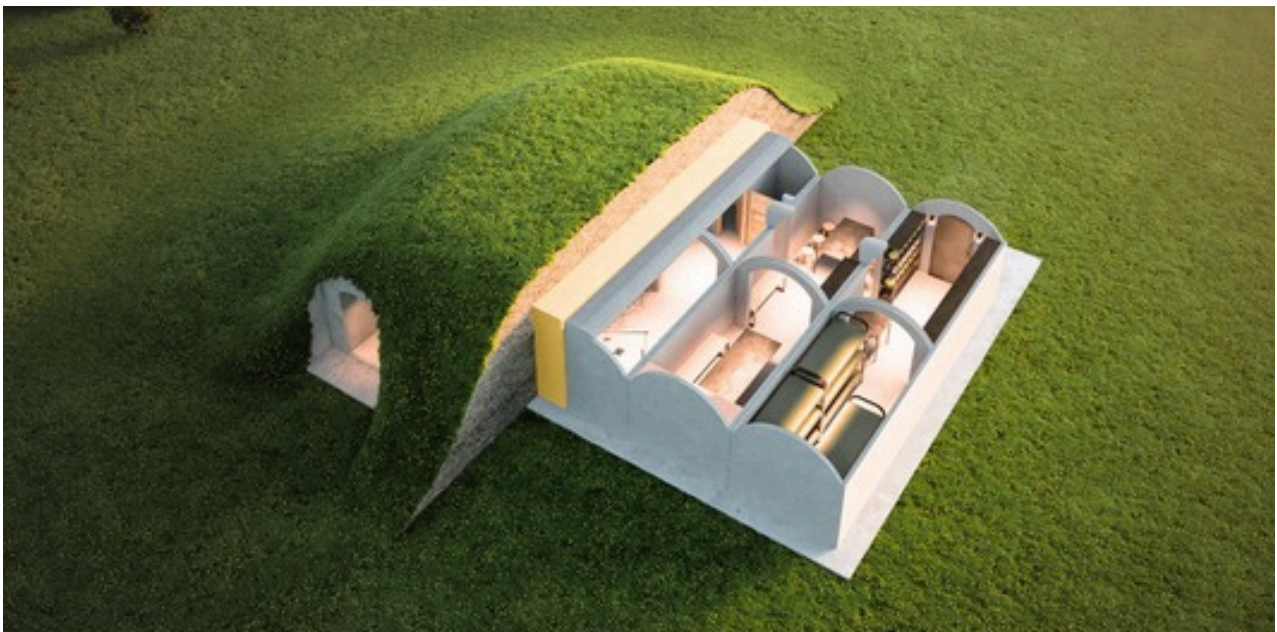


The escape shaft extension



The modular concept

If your vision extends beyond our standard configurations, then our modular concept offers complete flexibility for any requirement. Our system is built so we can combine different modules, entrances, and technical systems to create custom designs of any size or shape. This option is designed for those who did not find a perfect match among our standard models and need a bespoke solution. We can integrate areas for shower units, sleeping pods, secure conference rooms, or leisure spaces into a single, cohesive bunker complex. These high-capacity configurations are ideal for large-scale neighborhood projects or governmental civil defence initiatives where protection for many people is the priority.



Smart interior choices

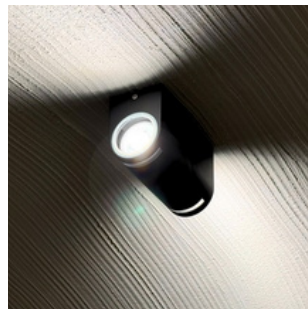
Interior finishes



Floors



Walls



Lights



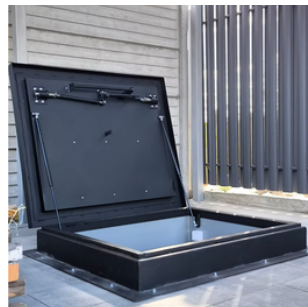
Sockets



Electrical box



S1 entrance



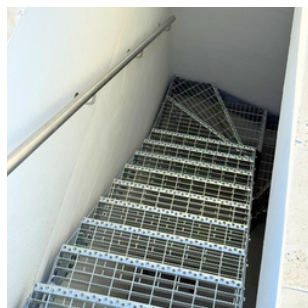
S2 entrance



S4 entrance



Blast door SO-1



Metal stairs



Arc ventilation unit



Safe 360 ventilation



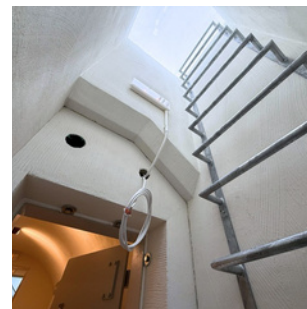
BVNC valve



Extractor fan Flexit 100DF



Vaulted concrete module



Optional escape shaft

Included in the price

The base price includes:

- ~ Reinforced concrete modules with 150 mm wall thickness and 300 mm end walls (where marked)
- ~ Waterproofing admixture included in the concrete
- ~ Sealant and fastener systems for connecting them on-site
- ~ Insulation and moisture protection with PUR foam, 100 mm on average
- ~ CBRN air filtration and ventilation system (Atmas Arc 50 for S1; Safe 360 for S2, S3, and S4)
- ~ SO-1 blast door (S1, S3, S4) or SU-III RWRT moisture-proof blast hatch (S2)
- ~ Interior walls and ceilings covered with colored textured lime plaster
- ~ High-quality LVT flooring in protected areas
- ~ Hot-dip galvanized entrance staircase with handrail (S1, S2, S3)
- ~ Technical sensors: Overpressure sensor and CO2 monitor
- ~ Metal ventilation pipes with bottom connections and wall sleeves
- ~ Peace-time ventilation: GK100 valves with a closing mechanism and a forced exhaust fan
- ~ Full electrical readiness: board, wiring, sockets, switches, and emergency lights, 220V
- ~ Protective and neutral-looking heat-shrinking packaging
- ~ Project management, technical documentation, and basic floor plans

Possible extras

Our solution has a usable lifetime of up to 100 years. This means that every possible extra should be thought out and planned as early as possible due to the nature of later complications.

The possible extras include:

- ~ Modular escape shaft for secondary exit
- ~ Connection package with water feed-through and passive antenna
- ~ Ventilation upgrade from Safe 360 to Arc series for S2, S3, and S4
- ~ Additional modules for showers, sleeping zones, or conference areas
- ~ BVNO blast valves for natural ventilation ducts
- ~ Electrical floor heating and thermostats
- ~ Partition walls with doors
- ~ Battery systems for backup electricity
- ~ Custom exterior and interior changes with the changing of blueprints

Not included in the base price

Here are some additional things that need your attention on your way to a new saferoom.

- ~ Cost of transport, crane service, or installation of modules on-site. This can be calculated by a quote
- ~ VAT or other taxes
- ~ Loose interior furnishings - chairs, carpets, kitchenware, the TV, nightstand, decorations, etc.
- ~ Costs regarding permits from local councils
- ~ Connection fees for water, sewage, and electricity
- ~ Plot preparation, later backfilling, and soil covering of the installed modules. This varies by ground and site conditions. The most reasonable solution for this is to find a local service provider

Discreete steps to safety

Your optimal setup

We work closely with you to find the right configuration for your specific needs. Once we have a plan, contact us for a site visit or consultation to get the process moving!



The simple site preparation

Manufacturing a standard shelter takes us 8-12 weeks. During this time, you need to prepare a simple hole with a compacted gravel base. You can easily order this from a local contractor to keep the site preparation straightforward and quiet. We will provide the plans for this.



All systems clear for go?

We ship our modules worldwide, and they reach your site fully finished on the inside. Thanks to the discreet white packaging, they do not draw any unnecessary attention during their journey to your property.



Installed in a day

Installation is a fast process that takes 1-3 days. It mostly involves connecting the modules and waterproofing them on the spot. Due to the weight of the concrete modules, a crane service is needed on-site. Later on at least 100 cm of soil needs to cover the module.



Built for generations

We provide you with all necessary documentation and user manuals for your new sanctuary. These reinforced concrete modules are engineered for a 100-year lifespan, providing a secure environment for you and future generations. We offer a 25-year warranty on the concrete modules, provided they have been installed in accordance with our terms, specifications, and installation guidelines.



Designed, tested and improved

Here is a summary of the steps that deliver you the peace of mind at the highest level

Experience through time. We have manufactured modular concrete systems for over 12 years and in that time have installed over 2000 modules that today guarantee all-year-round fresh food storage in cellars, relaxing steam experiences in cave saunas, and bring energy-efficient living to many families through underground houses.



Certified philosophies. What started from love against vaulted structures and ancient building methods has grown into a quality statement where we apply time-tested methods and modern technologies into something that is best described in our slogan “Crafted for generations” with a goal to pass all this knowledge onto future generations through the long lifespan of our solutions. During that process, we have been certified on a number of times.



100% renewable energy certified through Guarantee of Origin (GoO), provided by Sunly



ESV-EN 13369:2018
EN 14991:2007
EN 13225:2013
EN 14992:2007 +A1:2012



Tried and tested. Our modular system's durability has been tested and documented with NATO forces on several occasions. Our voluntary work in this field has also been awarded with the Estonian civil defence cornerstone award.



We have won trust both at home and abroad

For more than a decade, we've been dedicated to crafting homes we're proud of. With over 2000 installations under our belt, our reach extends not only across Estonia, but also into the United Kingdom, Finland, Germany, Sweden, Latvia, Lithuania, Norway, Iceland, Austria, and France.

Our experienced, professional, and trustworthy team ensures that every step of the process, from manufacturing to installation, meets the highest standards of quality and reliability.



Get in contact with us!

Veronika Svists

veronika@revonia.com
+372 5625 9222



Gerald Oeckl

info@protectedunderground.com
+41 76 682 39 23

